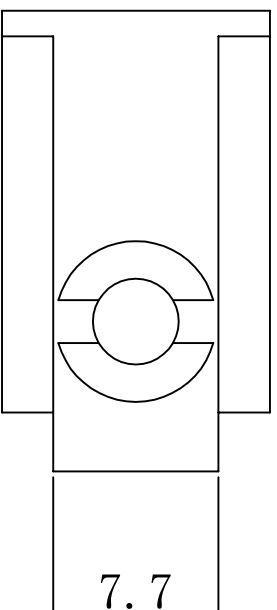
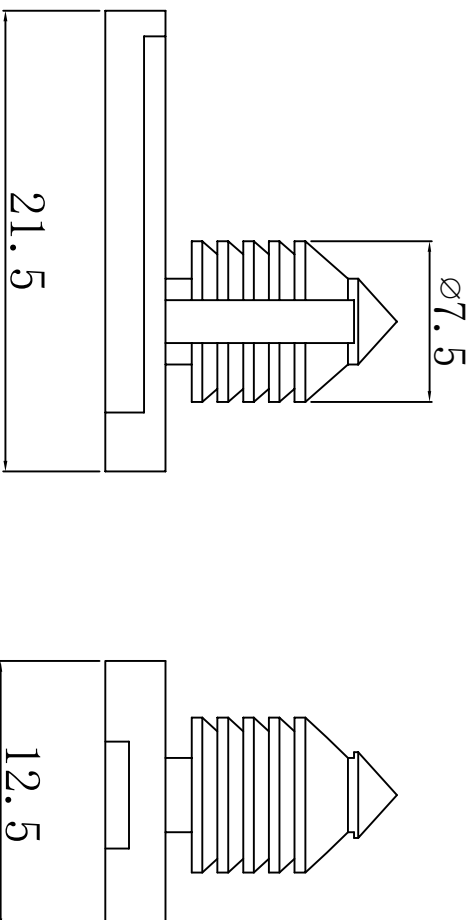


料号 Part NO.	品名 Parts Name	型号 Part NO.	孔径 Hole Dia (mm)	适用板厚 Panel Thickness (mm)
89-E25-014	汽车卡扣	M11	7.0	1.5-6.0



材质：尼龙66  
颜色：黑色  
温度：可达105℃  
未注公差  $\pm 0.5\text{mm}$ 。



未经受权不得修改和复印  
该知识产权属于技术质量部

DIMENSION		TOLERANCES		DATE		DATE		DATE	
0.0	±0.50								
0.00									
PRIST ANGLE PROJ				2016/08		2016/08		2016/08	
A	NEW PART								
LTR.	REVISION RECORD								
	DWG. BY								
	CHK. BY								
	DATE								
DWG. BY	CHK. BY	UNIT	REV.	DWG. NO.	HIMA/QR-JZ-89 -HIMA-M11				
liu liang	qulliuau	mm	A						
CHK. BY	APP. BY								
qulliuau	wang zhiqian								

HIMA 惠华 苏州惠华电子科技有限公司